

Features of Edgesafe 200 security system

- * *Non contact laser based system with up to 200 meter in range*
- * *Detect when the virtual barrier is broken*
- * *Detect persons in a dangerous area and make them alerted about the danger*
- * *The solution for platforms in train application, piers with high altitude, areas where machines can operate etc.*

Edgesafe 200 is a laser barrier solution aimed to warn and avoid problems when persons fall from a high level to a lower level in height. The system is specially aimed to increase safety level of platforms used for trains and sub ways as well as other similar applications. Edges are common and it is always a problem to get them safer.

There are lots of problems related to when persons come to close to the edge of a platform and fall down on the rail track by an accident or as a suicide act. This solution is designed to reduce this problem a lot in the accidental part of this problem. The voice alarm system is intended to help blind passengers form accidents.

**Many of our productr are protected by patents and patent applications*

Datablad nr Edgesafe20050208

LASEROPTRONIX
Bergdalen 2
172 92 Sundbyberg
Sweden
Web site www.laseroptronix.se

Tel:46-8-58170064
Fax to office: 46-8-668 05 19
(5 km North Stockholm)
Mobil 46-70-7140470
E-mail info@laseroptronix.se

Edgesafe security system

The solution is based on a long range photocell system covering the area close to the edge of the edge and when the sensed area is interrupted there is an alarm activated.

Output of the system is a relay for any type of external alarm. We do also propose to use the LED high intensity flasher system in combination with an audible system. The audio output can be a alarm bell but also a voice recording system asking for attention about the caused danger to be to close to the edge or dangerous area.

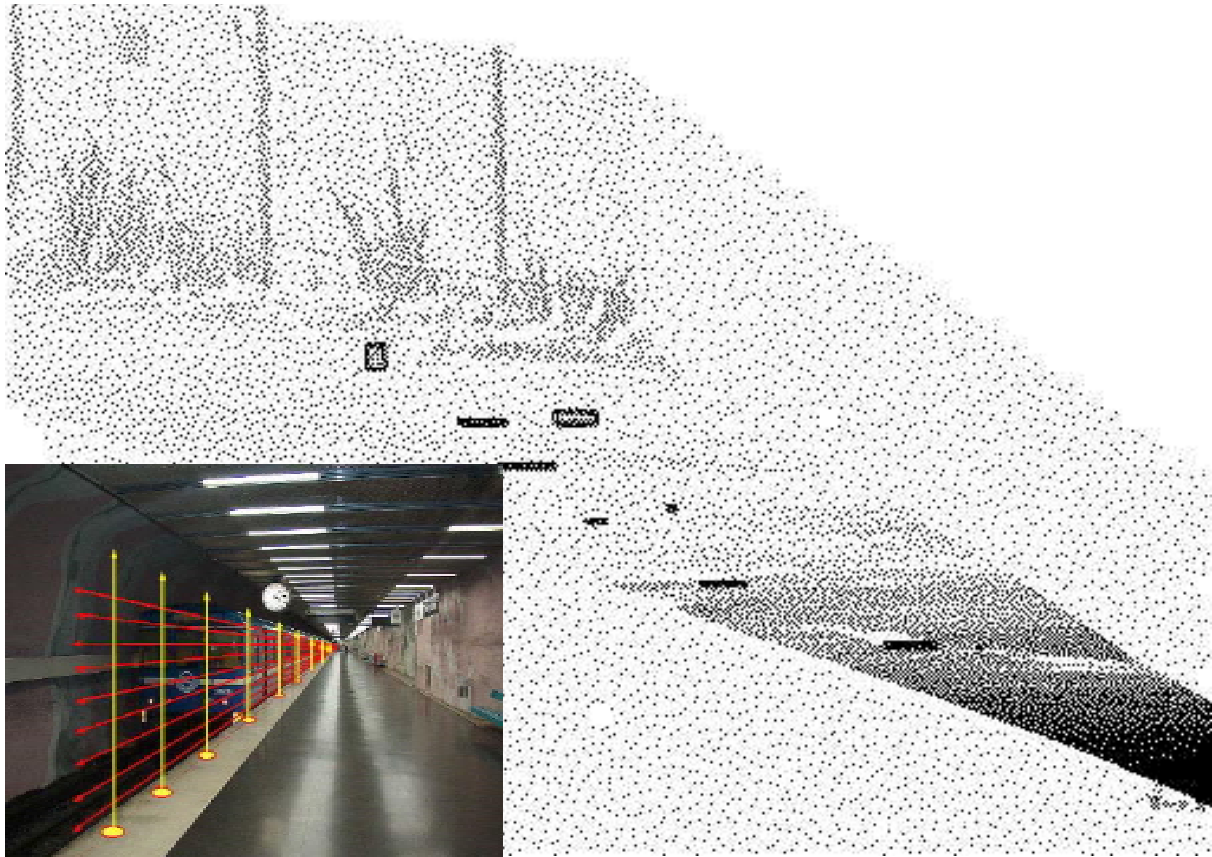
There is an unique optional ranging function where we detect the position of the problem and can activate a local alarm just operating a few meters beside the point of interruption. This can be used to control which camera shall look at the incident of the checked area is large.

There is normally a camera system connected so when there is a detected problem we activate the camera recording/transmission. The camera images can be transmitted to a security central or wireless to any other place including mobile connections.

Edgesafe-200 can be integrated into the Protectomatic total security solution offered by Laseroptronix

Technical specifications Edgesafe-200 Edge protection system

<i>Sensor</i>	
<i>Range</i>	<i>Max 200 meter out door Max 300 meter in door</i>
<i>Beam diameter of photocell</i>	<i>Less 50 mm all over the range</i>
<i>Response time</i>	<i>0,1 to 0,5 sec adjustable at receiver unit of the photocell</i>
<i>Camera</i>	<i>CCD black/white camera 420 TV lines</i>
<i>Camera sensitivity</i>	<i>0,05 Lux extended into the near IR area</i>
<i>Electrical encapsulation</i>	<i>IP 65 for out door operation Plastic encapsulation</i>
<i>Adjustments</i>	<i>All mechanical fine adjustments inside the external plastic encapsulation.</i>
<i>Operating voltage</i>	<i>12-24 volt DC. Max 25 W / unit x 2 units</i>
<i>Ambient temperature</i>	<i>0 to + 50 degree C (Optional - 40 to + 60 degree C)</i>
<i>Output signals</i>	<i>On / Off from relay of photocell PAL from camera systems</i>
<i>Dimensions</i>	<i>180x220x150 mm / 2 similar units</i>
<i>Weight</i>	<i>3 kg per unit</i>
<i>Camera system</i>	
<i>Alarm lamp system</i>	<i>High intensity LED flashers with red light</i>
<i>Lamp life time</i>	<i>100 000 hours in continuous operation</i>
<i>Ambient temperature</i>	<i>- 30 to + 70 degree C</i>
<i>Encapsulation</i>	<i>Wall mounted IP 67 level Floor mounted in a hole IP 67 level</i>
<i>Audio system</i>	<i>Electronic voice recorder (brand name Prator) Already in operation at fail ways as alarm bell</i>
<i>Message</i>	<i>To be defined by customer . Max 10 sec.</i>



Options for Edgesafe-200 edge perimeter protection system

- | | |
|---------------------------------|--|
| <i>Edgesafe-200-Dist</i> | <i>Option where we use a sensor which admits a distance detection to what is to close to the edge to exact where the disturbance is located. This replace the ordinary long range photocell.</i> |
| <i>Edgesafe 200-Distcontrol</i> | <i>PLC controller for using thee distance out put to give 5 RF-alarms at desired points close to the indication.</i> |
| <i>Edgesafe-200-PAL-Ext</i> | <i>Video booster admitting 400 meter length of cables</i> |
| <i>Edgesafe-200-Wireless</i> | <i>Wire less option for the camera admitting 300-3000 meter range with no video cables. Several models.</i> |
| <i>Edgesafe-200-Colour</i> | <i>Colour camera 420 TV lines and 0,5 Lux sensitivity</i> |
| <i>Edgesafe-200-VideoHD</i> | <i>Video logger based on a digital HD unit</i> |
| <i>Edgesafe-200-Grabber</i> | <i>PCI interface for the camera to a PC making the PC operating as a video logger / recorder.</i> |
| <i>Edgesafe-200-PS 230</i> | <i>230 Volt External power supply</i> |
| <i>Edgesafe-200-BUP</i> | <i>Powersupply with back up battery and charger</i> |
| <i>Edgesafe-200- LR</i> | <i>Longer range up to 200 and 250 meter out door</i> |

Many of our productr are protected by patents and patent applications

Datablad nr Edgesafe20050208