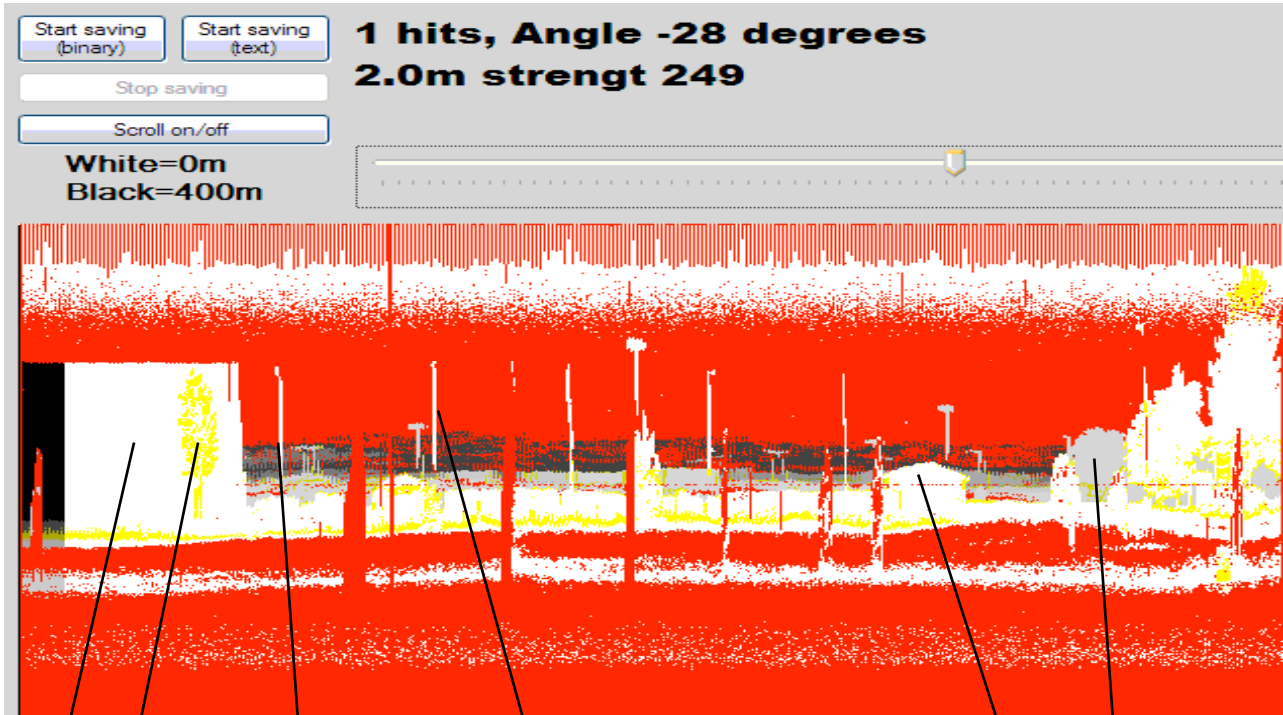


Ladar scans

Tests by airborne ladar unit from a car.

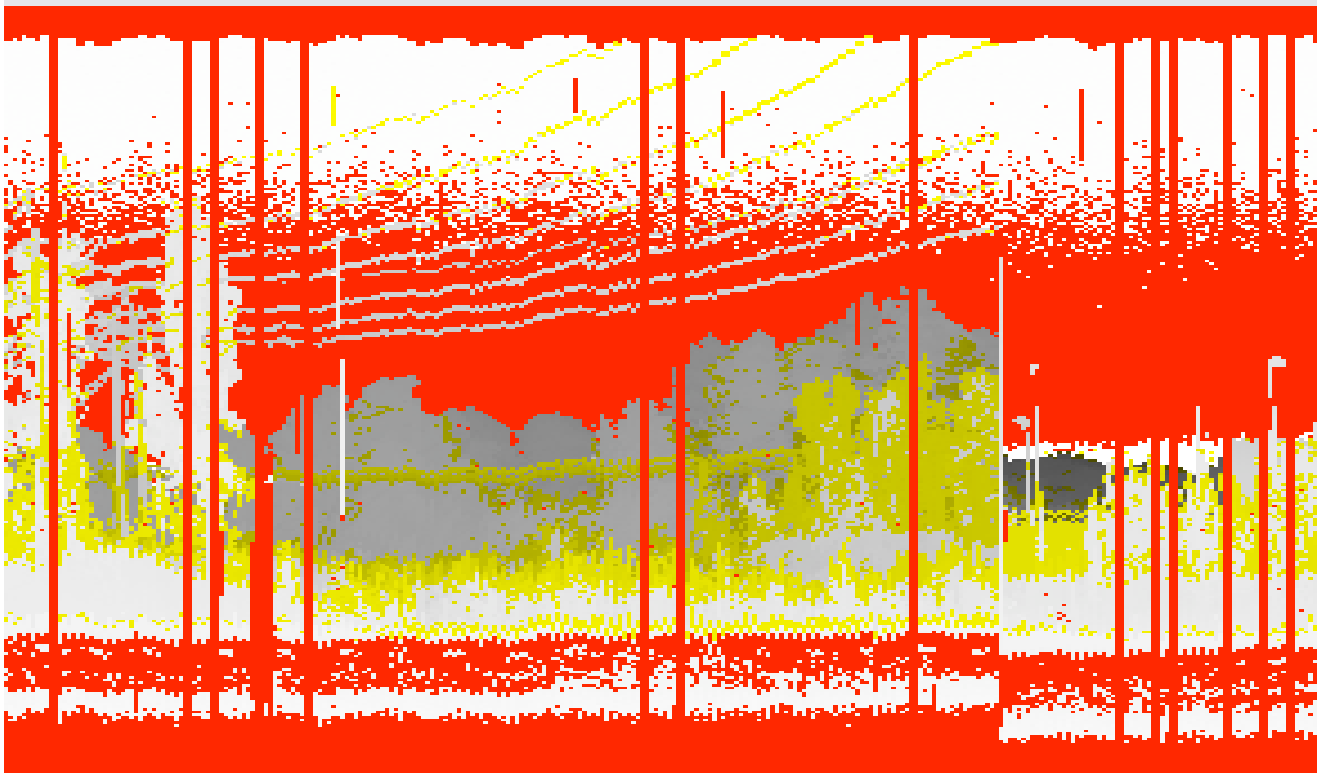


View of a commercial area. White square at left is K-Rauta building. On right side the parking lot with lamps clearly visible as white shaddows. They are about 50-150 meter away. There is a small building with a V-angled roof slightly at right. At far end about 300-350 meter away there is a forrest with pine trees. They are also visible but they split reflexes a lot and are hard to see in most cases.

Red at this side is less 4 meter and sky is red as there are no readings. The white at top is reflexes from car window. Pls note the tree at left in yellow which is penetrated by the laser and have dual depth coordinates.

There are some red interruptions caused by meetinbg cars closer than 4 meter.

Ladar scans



Scan over a field where trees at far end is about 250 meter away. On top we see the power lines. About 75 meter away we see power line cables.

All yellow areas have double reflexes in a single laser pulse. Here we collect 2 distances from one shot are 12500 Hz and max range we have checked is about 400 meter to trees.

Max range of range finder is 700 meter to a 30 % Reflexive target

All shots have a gray scale of reflex graded 0-10000.

Scan speed is 10 Hz and angle is about 60 degree. There is no gyro so all bumps and vibrations gives errors in this test.