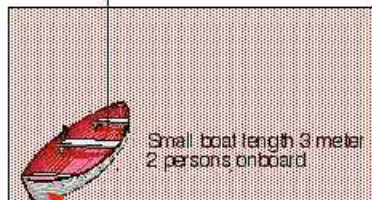


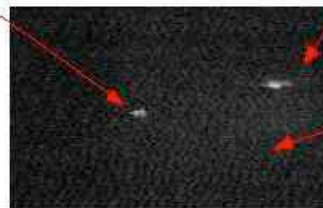
Distance 10-15 meter

Distance 600 meter from camera to small boat



Small boat length 3 meter  
2 persons onboard

Head lights of a car gives white spot at upper right corner

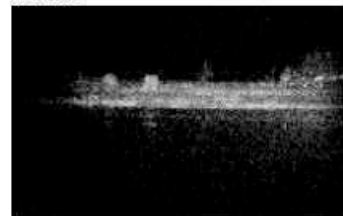


Water absorbs near IR lasers and gives almost no reflex to the camera. This makes it very easy to see anything in the water as it gives better reflexes than the water. Reflexes of life vests gives visibility over 1000-1500 meter for the SeaLynx system. Temperature of object do not matter at all and cold survivors can be detected in contradiction to thermal camera systems.

Boat illuminated but not the coast line behind the boat. Unneeded information is cutted away and boat is easy to detect.

Red zone is illuminated area. Depth is about 50 meter and zone starts just at sea side

Red zone illuminated area. Zone starts 5-10 meter out from coast line and is about 50 meter in depth



Coast line illuminated. Trees are some meters into the coast. There are more trees in the darkness behind this image