

Laser illumination system

2010-09-07 Page 1 of 2

Laser illumination system for high power and big angles with IR laser source 805 to 940 nm



Introduction

This big angle laser infrared illuminator is designed for the application of large areas and mid-long distance invisible illumination. It mainly used for project of lighting angle with special requirements. It combined high power laser and patent optic system to acquire best lighting effects. To satisfy different applications, this product can zoom at certain ranges. It is of low cost, the best choice of safety monitoring system based on black and white CCD and it is the best performance-price ratio



upgraded substitute of traditional monitoring devices.

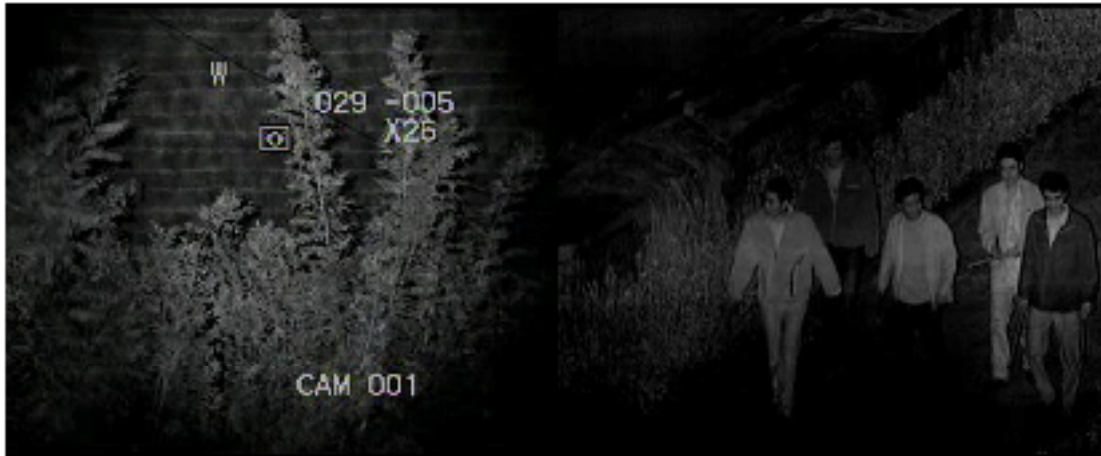
Main features

- Long night vision distance, up to 500 meters.
- Lighting angle big enough, up to $60^{\circ} \times 30^{\circ}$
- Many proprietary technologies, lighting source automatic zooming, light intensity shaping homogenization and infrared exposure elimination etc
- Fine lighting effect, high lighting uniformity

Laser illumination system

2010-09-07 Page 2 of 2

Infra red lasers is a very good illuminator combined with high sensitivity CCD cameras. The combination can give high quality video images up to 3000 meter in range.



Technical Indicators

Lighting Source Power	15w
Laser Wave Length	940 nm
distance	150m—30°×15°, 500m--9°×5°
Lighting angle	Customized for 9°×5°~30°×15°, 60°×30°
Infrared Exposure Elimination	Customized
Working Temperature	-25℃ ~ +50℃
Storage Temperature	-40℃ ~ +65℃
Size	≤240mm×90mm×70mm
Average life	10000 hours
Protection Grade	IP66

Contrast with LED

Function indicators	Infrared LED	Big angle illuminators
Lighting distance	near	Far(up to 500 m)
Lighting angle	certain	adjustable
Lighting uniformity	Low	High
Power consumption	high	Low(fall 70%)
size	large	small
weight	heavy	Light
Performance-price ratio	Normal	high