

Laser dome camera LD 200



LD 200 Laser Dome Camera

- Integrated unit with laser illumination unit, ccd camera and pan and tilt unit
- Synchronous zoom + super wide angle 2° to 45° for camera and tracking laser
- 23X visible and near IR CCD camera. Auto focus or manual control
- Independent developed near ir laser laser diode; long lifetime up to 20000 hours.
- 0.05°~360°/s high speed pan and tilt unit with advanced operation
- Intelligence functions auto reversal, presetting ,cruise ,self-checking ,record pattern etc.

Technical specifications

	Power supply	AC24V±10% max 100W
	Interface	RS485 compound video output AC24V
Technical Indicators	Performance	Night vision distance 300m to people in total darkness. Monochrome operation. Day vision distance 500-1000 m color operation
	MTBF	≥10000 hours
	Fatigue Test	Continuously 10 000 times test

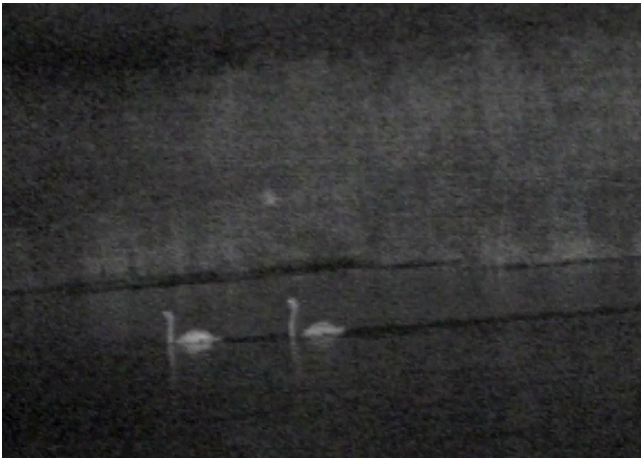
Laser dome camera LD 200

2010-10-02 Page 2 of 3

Safety Indicators	Laser spot	When power on, laser spot is biggest Laser safety class 3B at short range 0-7 meter. Class 1 at longer ranges
	Thunder proof	Consistent with GB / T 17626.5-1998 AC power cord less than Grade Three; DC, signal, control and other input line can afford surge (impact) interference of Grade Two
Environmental Indicators	Working temperature	-25 C to +55 C
	Storage temperature	-40 C to +80 C
	Protection Grade	IP65
	Vibration Indicators	Comply with GB/T 1857.10 standards
Color CCD Camera	Model	23X1/4" infrared sensitive CCD. Monochrome in low level operation and color at over 1 Lux
Pantilt Function	Pan Speed	0.05°~360°/s
	Pan Range	360°
	Tilt Speed	0.05°~180°/s
	Tilt Range	0°~180°, auto reversal
	Presets	At most 256 preset 2 axis angles
	Scan speed	0.5° to 30 °/s
	Cruise function	6 tracking paths
	Self-checking	40s
Illuminating function	Wiper	Has wiper
	Laser power	4W
	Lighting Angle	2°~45° big angle synchronous zoom tracking the CCD camera. Manual over ride possible by commands
	Illuminating Zoom Speed	3S quick zoom

Laser dome camera LD 200

2010-10-02 Page 3 of 3



Birds at 160 meter distance in deep darkness illuminated by laser illumination system.