

## Applications for Protectomatic ScanGrabber

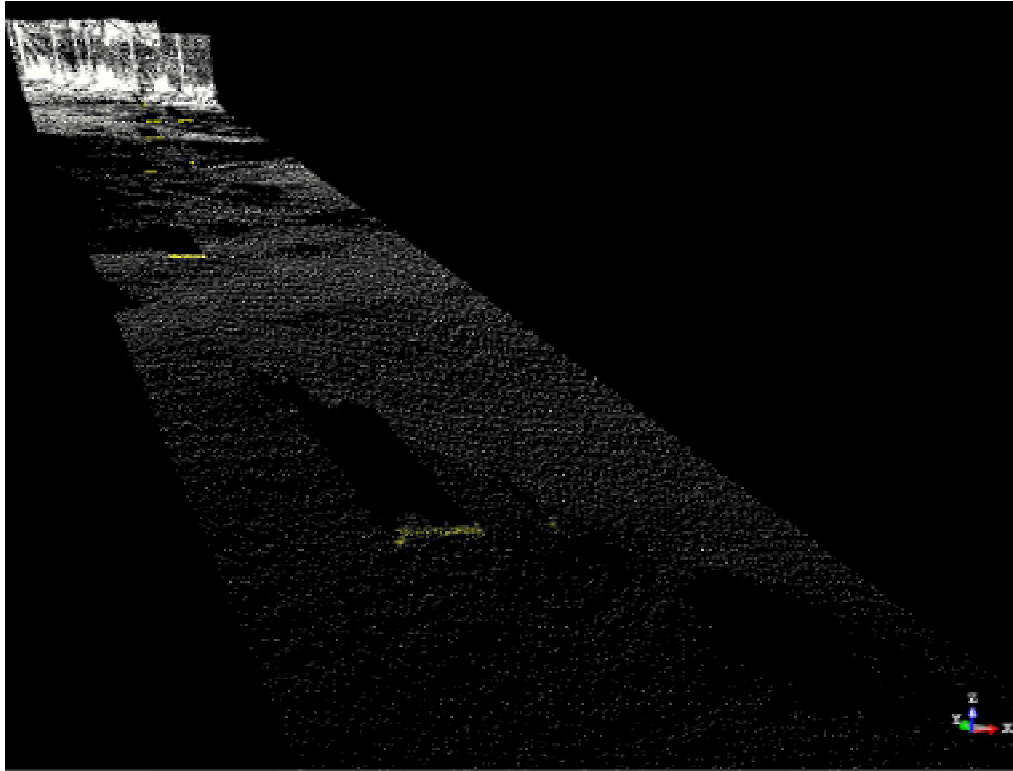
- \* Protecting areas and fields for intruders or any type of movements
- \* Creating virtual zones and to check everything happening in this area
- \* Create areas of alarms over areas where no mechanical protection can be arranged like water areas and swamps.
- \* Airport , power station , water supply and harbour area protection applications
- \* Protecting large area parkings for cars and buses
- \* Protection of train and sub way areas for graffiti painters and vandals
- \* Protecting military and UN camp areas in difficult environments

ScanGrabber systems is a unique solution based on the Protectomatic ideas. This unique and compact system is designed to sense intrusion in an area in or out doors. The system use an electro optical scanner making a real 2D or 3D map of the area looking for intruders or known staff carrying an ID card. The integrated card reader analyse who is there and the 2/3D scanner detects where in the area the guests are located. It can also see how many guests there are and the shape / dimension of the guests. If this information do not fit into what is allowed to be here the alarm is activated.

Admitted persons or vehicles in the area carry a special tag giving them authority to be here. These persons / objects are not detected at all or gives a soft output telling all is OK and someone with permission is here. Intruders with no card will generate an alarm by a relay output. Intruders with wrong 2/3D characteristics as analysed by the scanners do also give an alarm. Pedestrians shall have a pedestrian shape and if not we make an alarm. If there are several persons / objects detected the card reader shall detect as many as there are detected objects / related shapes in the area. If this do not fit in quantity there is an alarm. If the shape do not match the preset shapes the alarm is on.

*Many of our products are protected by patents and patent applications*

*Datablad nr Scangrabber 05 10 30*

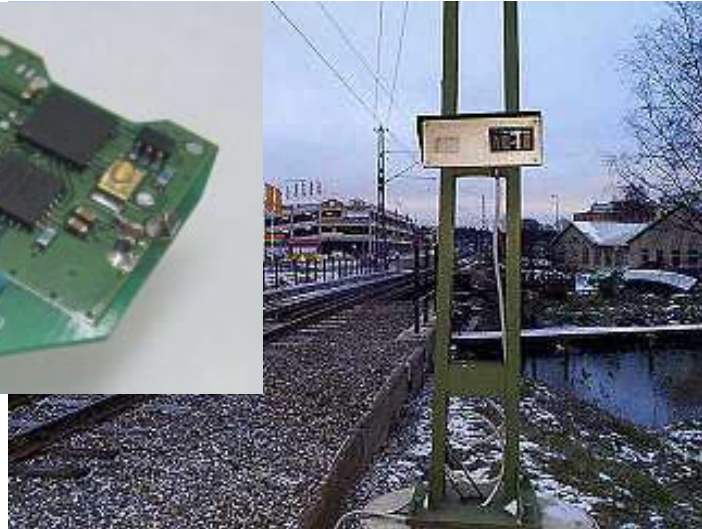
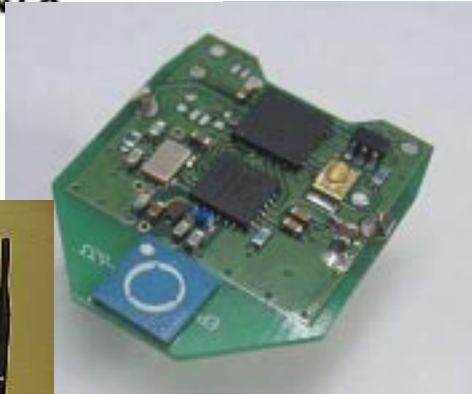


## Technical specifications Protectomatic SG ScanGrabber systems

Model	SG 200	SG 400
Max detected area	200 meter over 60 degree	400 meter over 60 degree
Sensing area	Horizontal scanned sector up to 60 degree.	
Thickness of scanned area	250-300 mmm at 100 meter in distance	
Distance discrimination resolution	0,1-0,3 meter typically	1-2 meter typically
Measuring Ladar speed	1000 or 5000 points per sec	200 points per sec
Installation distance	0,5-1meter over the ground surface	
Presence detector	Infrared laser radar system	
Laser safety class	Class 1 harmless for the eye.	
Reflex mode sensing	Can detect small objects 10 cm over the ground with reflex at the far end ( rail top )	
Scanning speed	Detects foreign objects in 2-5 sec	

### ID card reader specifications

Card reader range	200 meter	300 meter
Card sensing area	100x100 m	300x300 meter
Response time	Typical 2-5 sec	
Dimensions	375x250x320 mm	
Encapsulation	IP 67 waterproof	
Connection	Ethernet or wireless LAN or wire less RF / RS 232	
Operating voltage	230 volt AC by wall adapter ( 12/24 volt )	
Power consumption	Max 100 W	
Operating temperature	-20-40 Degree C.	
Card dimension	15x40x70 mm	
Card power supply	1 -2 weeks on each charge	
Card encapsulation	Splash proof plastic IP 54 level	
Operating temperature	0-50 degree C ( normally OK at pockets at winter time )	



The system is normally fail safe giving an alarm when manipulated or when out of operation by some reason. The fail safe technology is of same style as used in rail road technology.

The ScanGrabber is a stand alone unit and is only needing an electrical supply to work. It can communicate to the system network wire less or by a cable. Optional battery back up systems admits operation for several weeks stand alone with no main voltage connected.

The relay alarm outputs can be connected to external alarm systems like net works, SMS/GSM technology etc. This admits communication with a central system but also walking guards who need the alarm. Integrated camera options can transmit a video / image of the incident and HD recorders can store all information about what happened. This is perfect for the follow up works. Direct camera link to guards when alarm is activated ( option ).

Options for Protectomatic ScanGrabber systems

- SG-CAM/PAL Camera system integrated into the ScanGrabber unit. Cable connection TP cable max 50-100 meter.
- SG-Cam/2400 Camera system with 2400 MHz wire less communication to max 100 meter free sight distance
- SG-Digicam Camera system with digital long distance wireless link. Max 500 meter range and over 100 meter through office buildings.
- SG-Niviscam Night Vision camera system Generation 2+ with PAL output
- SG-HD/Recorder Video recorder and storage system. 40 GB HD for 6-125 hours recording depending on image quality.
- SG-Bup Battery back up system for ScanGrabber systems 230 volt charger
- SG-Heater Integrated heater for operation to - 40 degree C. 230 VAC operation max 100W power.
- SG-Alarm Alarm unit for manual start of the system by staff

*Many of our products are protected by patents and patent applications*

*Datablad nr Scangrabber 05 10 30*